

ANNOUNCEMENT.....#09-26, September 16,2009

To: All Michigan Mutual Brokers

Re: MDIA Disclosure Process

CLOSE LOANS FASTER

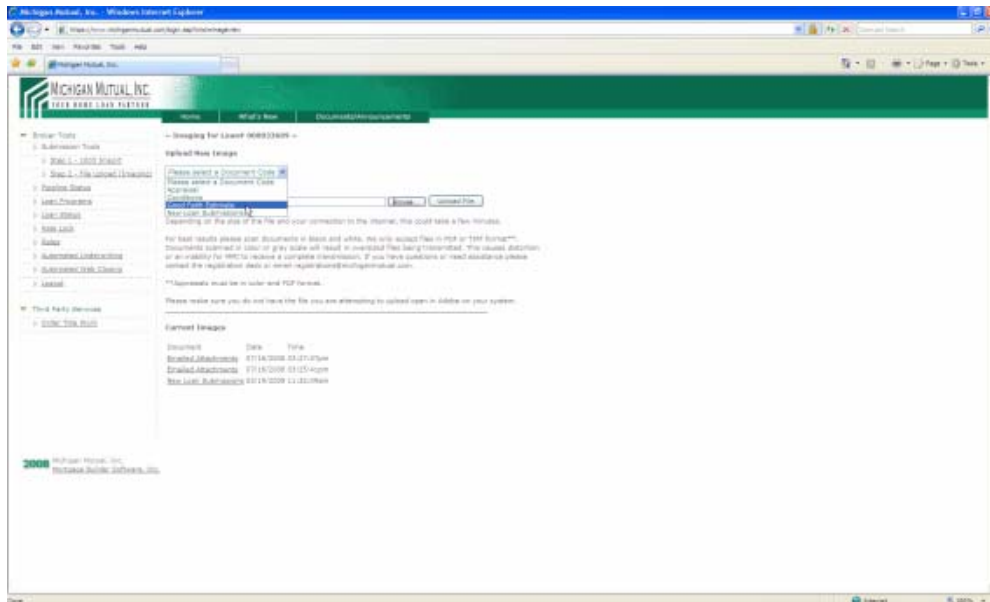
MDIA Disclosure Process

The following process is being implemented by MMI immediately. In an effort to minimize delays, caused by the MDIA/TILA disclosure requirements, MMI will now disclose upon receipt of a 1003 upload and a GFE submission. This way time will not be lost as documentation is collected from the borrower.

HOW TO DISCLOSE WITH MMI

STEP 1: Log onto www.michiganmutual.com sign in under broker tools and select Step 1 – 1003 Import.





IMPORTANT NOTICE:

As before, a TIL will be disclosed at time of submission if it is the first time we are receiving the GFE.

Thank you for your business and continued support!

Please contact your account executive or should you have any questions.